

JB-108



MODULAR SELF ELEVATING UNIT
MAX LEG LENGTH 47.4 M

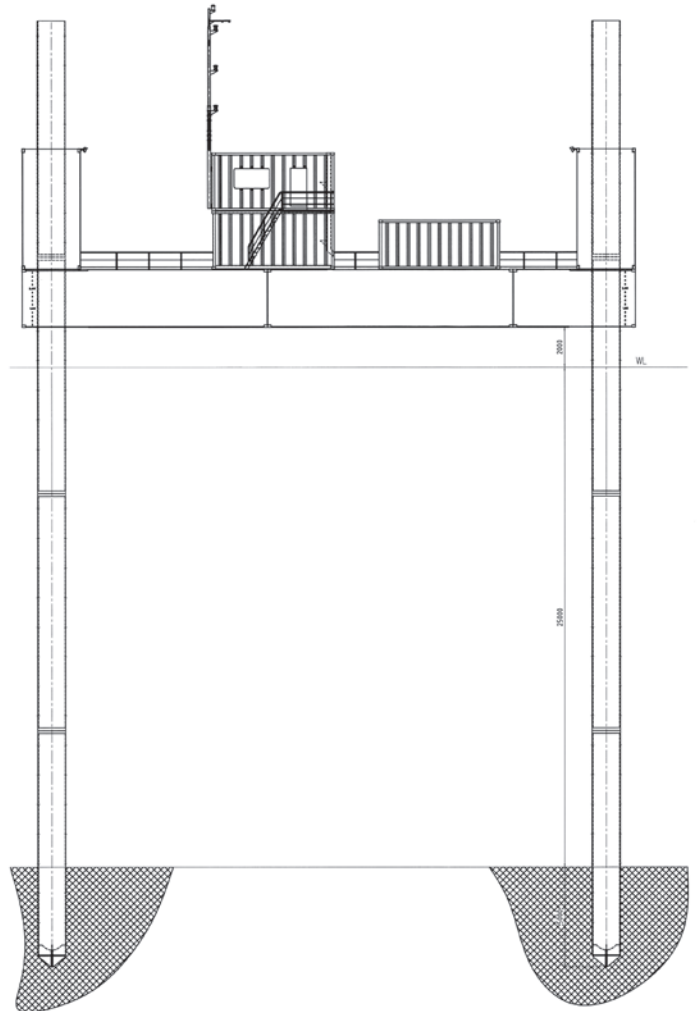
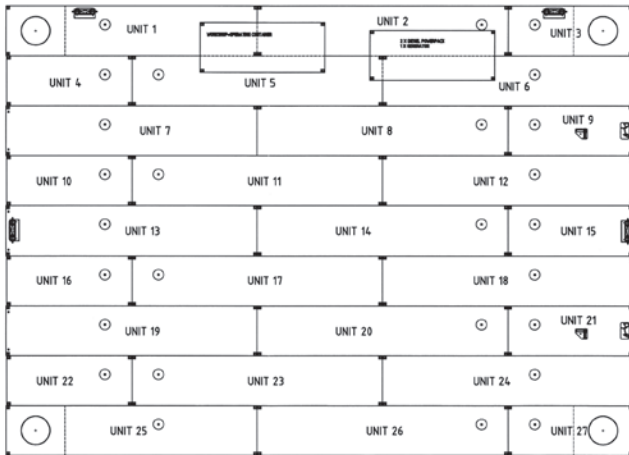
MAXIMUM WATER DEPTH 25 M
PAY LOAD 400 T

JB-108

**FULLY CONTAINERISED [100% ISO SEACONTAINERS],
DISMOUNTABLE UNIT**

Germanischer Lloyd \times 100 A5 K (RSA 20) self elevating unit

Lenght	30.5 meter
Breadth	22.0 meter
Depth (height of pontoon)	2.9 meter
Leg lenght	47.4 meter
Leg diameter	1.4 meter
Moon pool	Ø 1020 millimeter



JACKING SYSTEM

Jacking speed	15 meter/hr
Jacking stroke	1.5 meter
Maximum pay load	400 tons
Powerpack	1 Diesel hydraulic powerpack 280 kW

OPERATION CONDITIONS

Maximum water depth	25.0 meter
Wave height	2.0 meter
Current velocity	2.0 meter / second
Wind velocity	13.0 meter / second