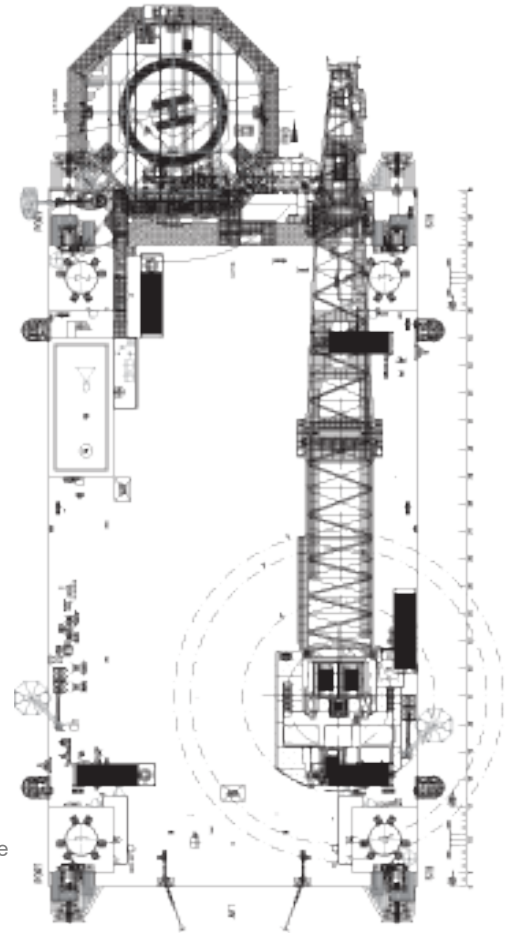
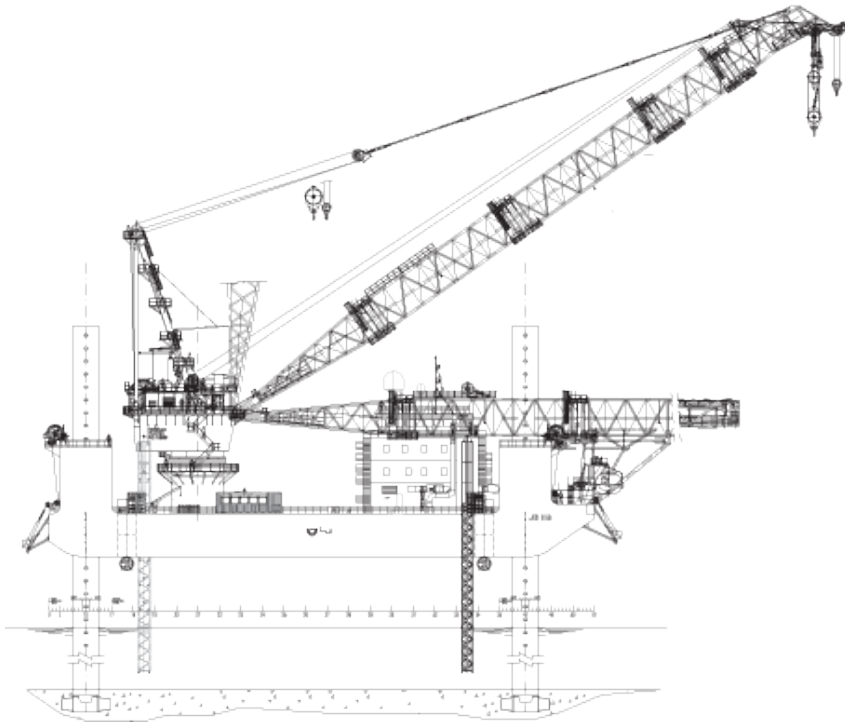


DP2

FROM NON PROPELLED TO DP2 SELF - PROPELLED PORTABLE DYNAMIC POSITIONING SYSTEM (DP2) WITH JACK UP BARGE EXPLAINED



KEY BENEFITS

- ❁ DP2 solution without weather down time (~100% operability)
- ❁ DP2 solution without consuming fuel once jacked up
- ❁ DP2 solution without DP2 crew. Once positioned, crew and even DP2 equipment can be removed if projects requires
- ❁ Only only in DP2 mode when required
- ❁ **More cost effective** than a DP2 vessel with similar accomodation or crane capacity
- ❁ deal for moving in or infields moves.

The JB 118 is ready made to be equipped with a Portable Dynamic Positioning System (DP 2). 4 Azimuth thrusters will be placed on each corner of the jack-up barge together with a power supply container. An additional 30' container will be placed on the jack-up barge and will be used as a control room. Each thruster is fully retractable.

After positioning and If the projects allows the DP CREW (and even the thrusters, together with the power supply containers and control room) can be removed from the jack-up barge making it a very cost effective offshore projects solution.

PORTABLE DPS-2 SYSTEM

Thrustertype

3B

7K

:HLJKW

PHVL

4x Veth L-drive, type VL-900
900 kW / 900 r.p.m. each 148 kN
each
33.000 kg each
8505 x 2440 x 2970 mm
(L x W x H)

7SHS

PHVL

:HLJKW

36VWHP

30' sea container
9140 x 2438 x 2891 mm 23.100
kg
Kongsberg K-pos including
Cyscan